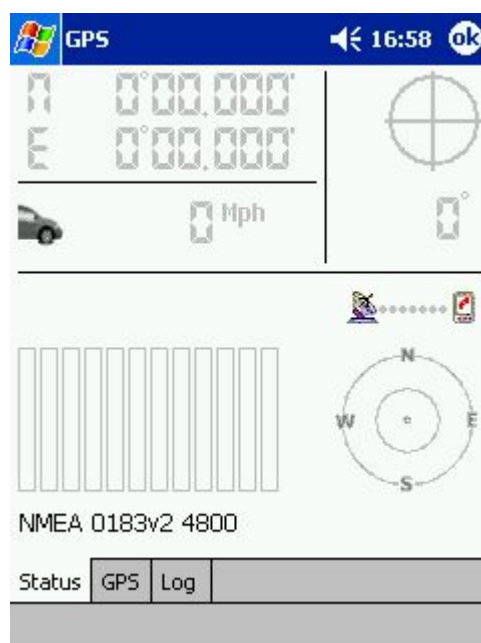
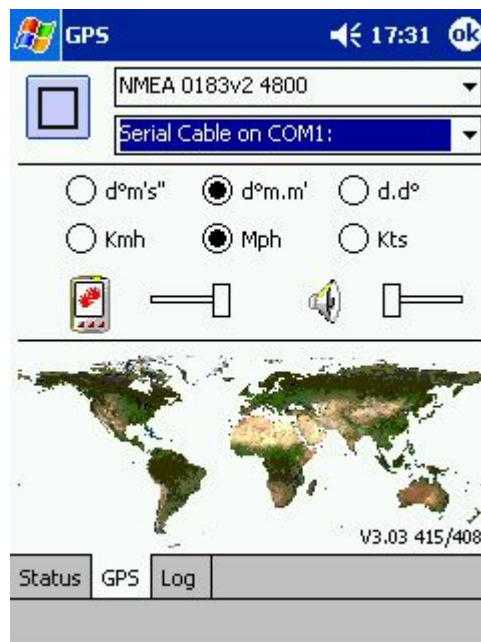


Installation Guide for Globalsat Wired GPS Bundles (PPC)

1. First Connect your PDA to your PC, ensuring before you connect the PDA to the PC that Active Sync has been installed.
2. Install the TomTom 3 Software onto your PC following the on-screen instructions and prompts.
3. Select the Map(s) you wish to install and install them to the location of choice – generally it is recommended to install map(s) onto a memory card suitable for your PDA.
4. For the wired bundles the next stages are done whilst in car.
5. Connect the PDA and Globalsat GPS system using the in car charger cable. Ensure the Globalsat GPS has a clear and unobstructed view of the sky so it can pick up satellite signals.
6. Click on the Windows Start Icon on the PDA and select the TomTom GPS setting, scroll down if necessary to locate this.
7. In the new page that loads you should see an icon with the words GPS settings below it, please click this. See below.

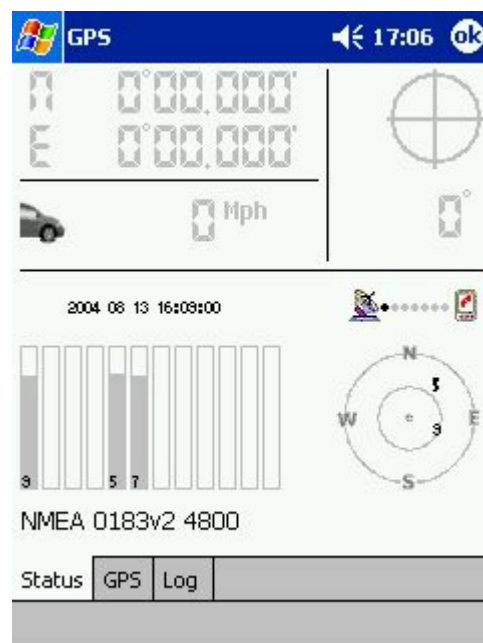


8. On the next page you should have a tick box on the top left with two drop down menus to the right of it as shown below.

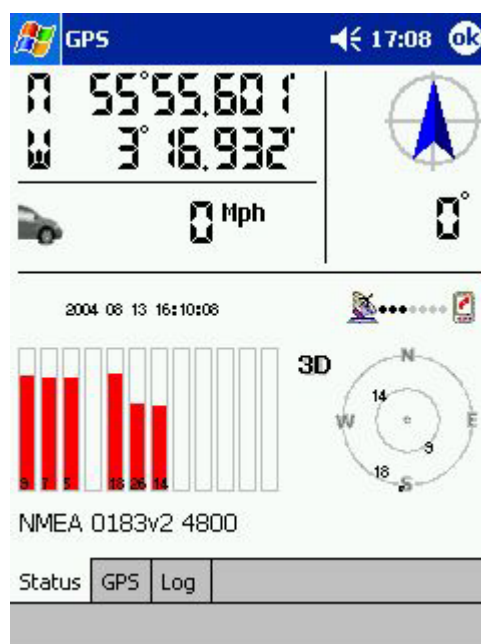


9. If there is a tick in the box click it to remove the selection, then in the top of the two drop down boxes scroll and select the **NMEA 0183v2 4800** setting as shown above, then in the second box select Serial Cable on **COM1**: again as shown above. Once you have done this, tick the light blue box on the left again and go back to the status page by clicking the status tab at the bottom of the page.

10. Your **Globalsat** GPS receiver should now be set up correctly set up and should start to receive satellite signals as shown below. Note the black dots moving left to right between the images of satellite and PDA.



11. Once the Globalsat GPS receiver is ready to navigate the page should look something like that shown below.



12. For further information on the TomTom 3 Navigation Software, please refer to the TomTom manual which is available on the CD, or check the TomTom website.