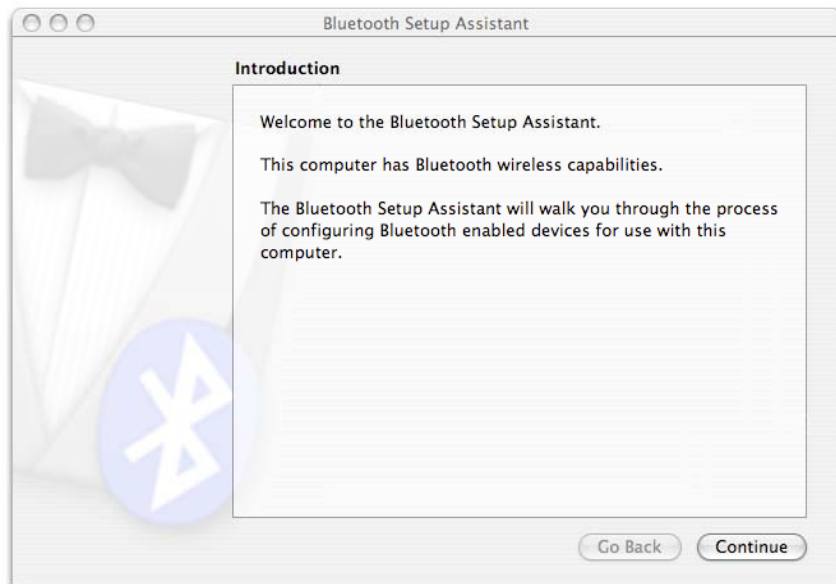


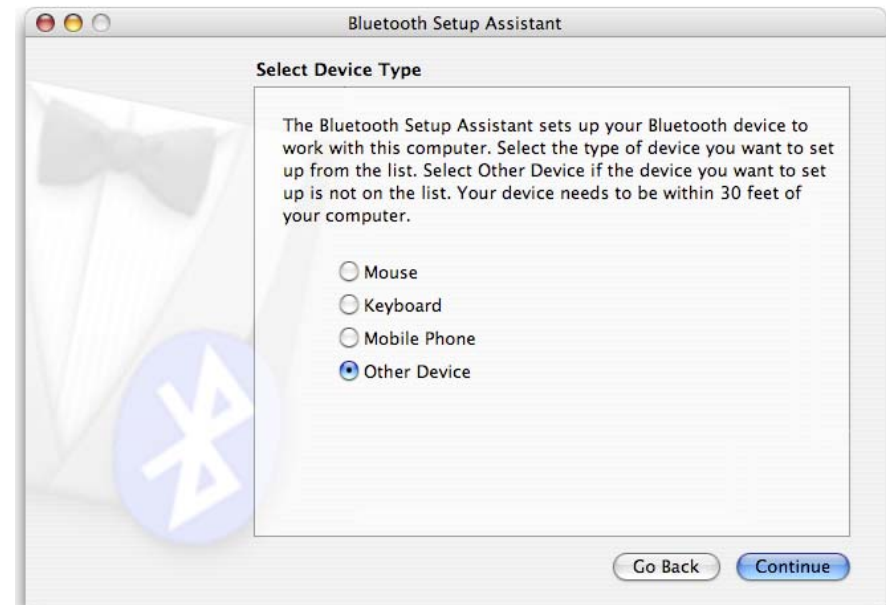
Setting up the Rayming TN-206 Bluetooth GPS on OS X



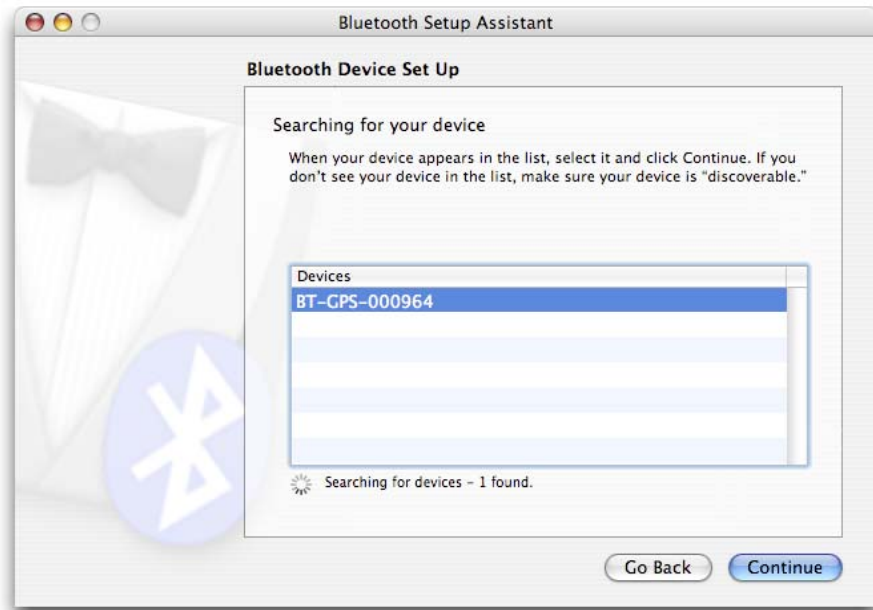
1.) In the utilities folder find two applications



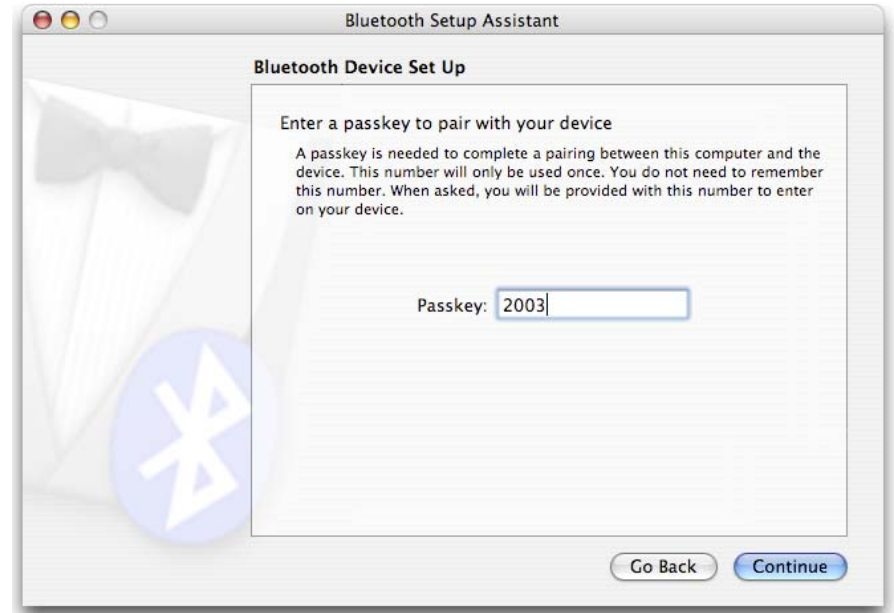
2.) Launch the Bluetooth Setup Assistant... then select **Continue**



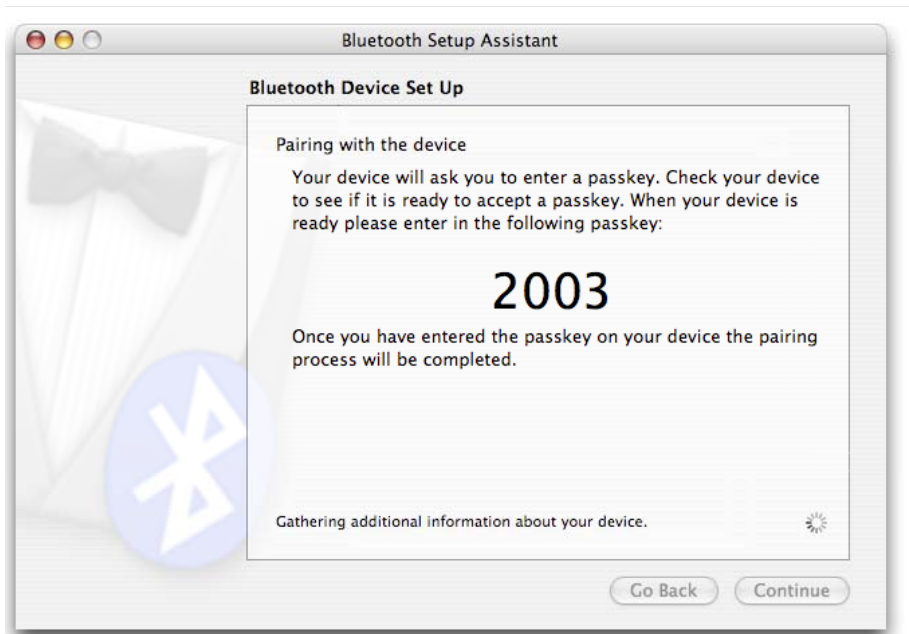
2.) Turn the power on the Rayming TN-206 Bluetooth GPS. Select **Other Device** then click **Continue**



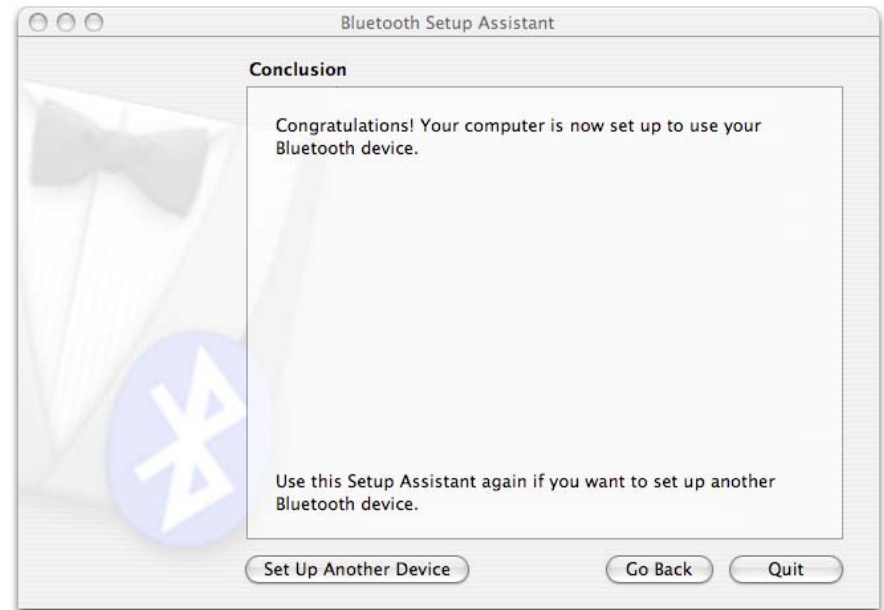
4.) Select **BT-GPS-XXXX** in the list then select **Continue** button...



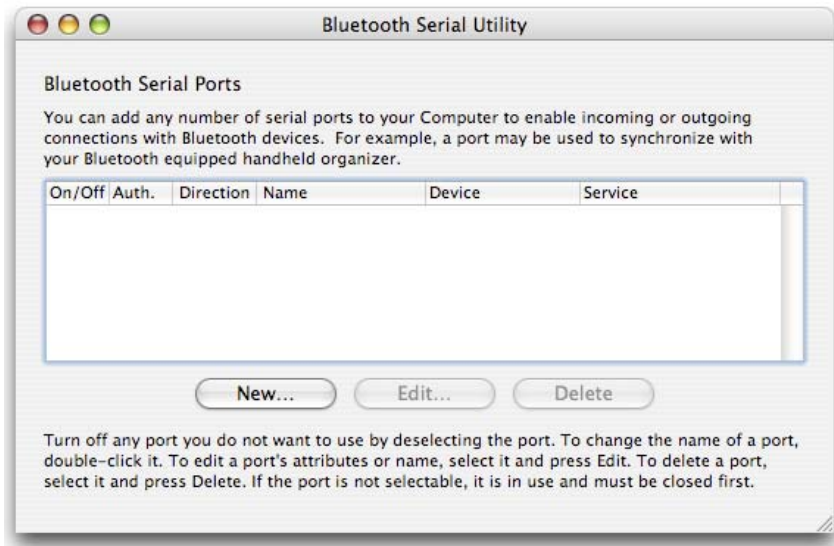
5.) Enter **2003** for the Passkey then select **Continue**.



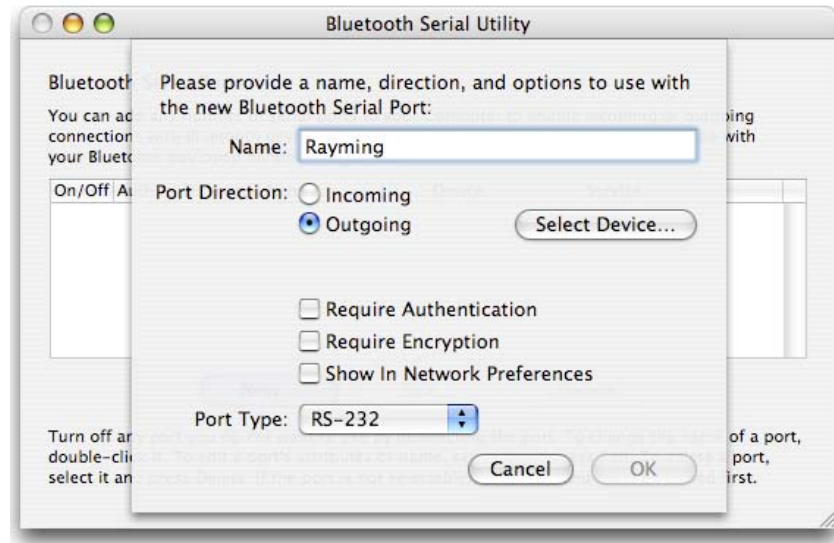
6.) If the Rayming TN-206 Bluetooth GPS responds the status will be shown. Select **Continue**.



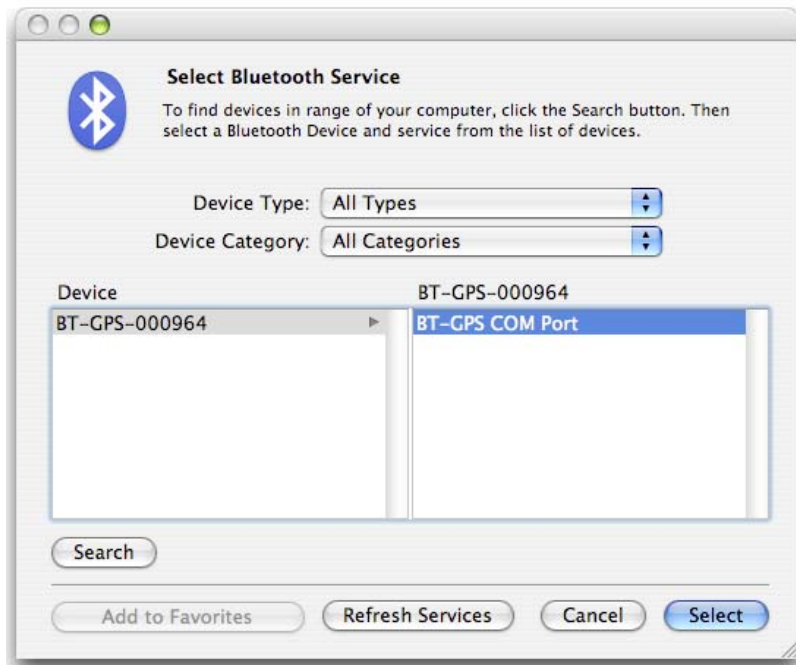
7.) The Rayming TN-206 Bluetooth GPS is now paired with your MAC. Select **Quit**.



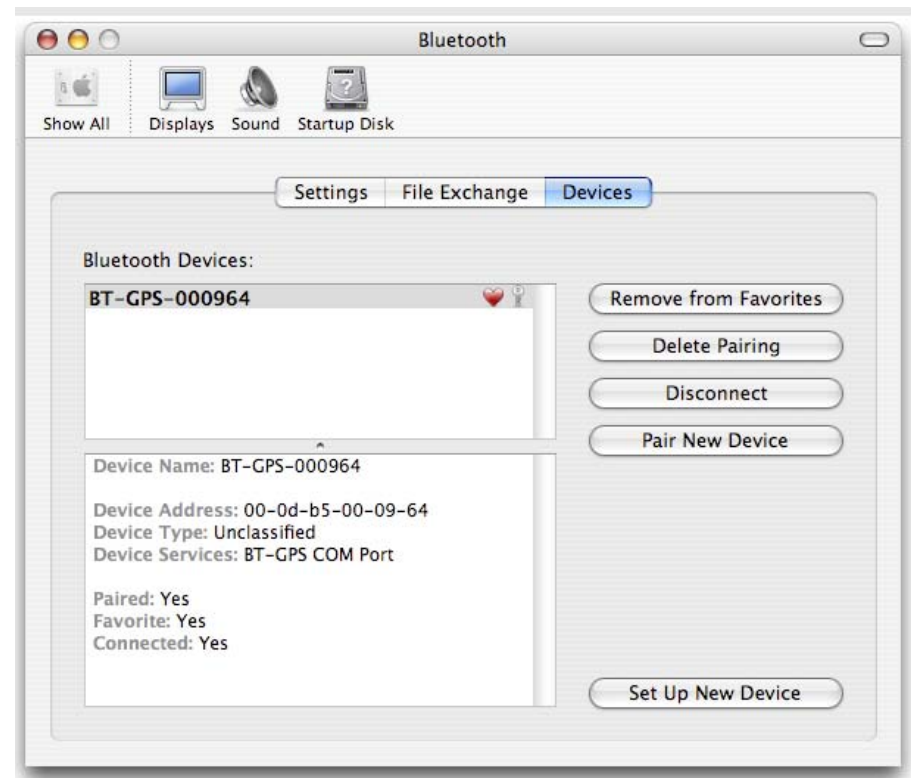
8.) Launch the Bluetooth Serial Utility then select **New...** button



9.) Enter a name for the serial port, for example, Rayming or TN-206.
 Select **Outgoing** for Port Direction
 Select **RS-232** for Port Type
 Select the **Select Device...** button



10.) Select **All Types** for Device Type.
 Select **All Categories** for Device Category.
 Select **BT-GPS-XXX** for the device.
 Select **BT-GPS COM Port**.



11.) To disconnect the Rayming TN-206 Bluetooth GPS, open the System Preferences and select the Bluetooth panel...

Close any Navigation Software
 Select the **Disconnect** button